



JOYA™ TOUCH IS THE MULTI-PURPOSE DEVICE FOR RETAIL

Joya Touch is the multi-purpose device for use throughout retail that optimizes your ROI. The Joya Touch device is designed for use in Self-Shopping, Shop Floor, Access Control and more.

MULTIPLE DEVICES IN ONE

The Joya Touch device comes in two form factors: a handheld version resembling a smartphone and a pistol-grip version with a comfortable trigger. Joya Touch can be easily customized in several ways: upper case, front logo, battery cover and screen protector, both in colors and themes. This allows the retailer to choose either their corporate branding or other co-marketing logos.



WIRELESS CHARGING CRADLE

The Joya Touch device is charged using the industry's first wireless charging technology that eliminates the need for cleaning the contacts on the device and cradles. It radically reduces support costs and increases its life span.

The multi-bay cradle supports both handheld and pistol-grip models of the Joya Touch, ensuring the right configuration for every user/application. The retailer can choose between high density and front facing display installation, providing maximum flexibility.

USER INTERFACE

The user interface features a large touchscreen display along with Datalogic SoftSpot™ technology which allows users to choose the position of the soft trigger on the display.

BOOST AND FAST CHARGING

The Joya Touch device requires only 2.5 hours to recharge and the 'boost recharge' feature ensures 80 minutes of use after only 15 minutes of charging!

BLUETOOTH® WIRELESS TECHNOLOGY V4.0 - BLE AND BEACONS

The Joya Touch device supports Beacon technology for in-store localization. Bluetooth wireless technology and BLE can also be used to connect a wide range of peripherals such as printers, RFID readers, or other BT serial profile devices.



FEATURES

- Multi-purpose device: handheld or pistol-grip
- Wireless charging and high versatility cradle
- Boost and fast recharging
- Datalogic SoftSpot technology for innovative triggering through touch display
- 3-Axis Accelerometer detects changes in screen orientation
- 4.3 inch FWVGA and QVGA display
- Vibration feature informs users about upcoming events, discounts, promotional offers, etc.
- Fully supports Datalogic's self-shopping middleware 'Shopevolution' or third-party software
- Supports Datalogic's Queue-busting app
- The speaker informs users about upcoming promotions and sales, discounts, etc.
- Beacon support via BLE for geolocation
- 2D imaging technology
- Datalogic's patented 'Green Spot' technology for visual good-read feedback
- USB connectivity
- Anti-theft Buzzer to protect the Joya units from leaving the premises
- EASEOFCARE Service Plans offer a wide range of service options to protect your investment, ensuring maximum productivity and ROI

INDUSTRY-APPLICATIONS

- Retail
 - Self-Shopping
 - Queue-Busting
 - Inventory
 - Access Control
 - Gift Registry
 - Shop Floor Applications
 - Assisted Sales

TECHNICAL SPECIFICATIONS

WIRELESS COMMUNICATIONS

LOCAL AREA NETWORK (WLAN)	IEEE 802.11 a/b/g/n; Wi-Fi Security Standards, WEP, WPA, WPA2, TKIP, AES, PSK, Cisco CCX v4 compatible
PERSONAL AREA NETWORK (WPAN)	Bluetooth wireless technology v4.0 - Dual Mode (Classic Bluetooth wireless technology and BLE available on Plus models)
NFC COMMUNICATION	NFC communication between device and cradle

DECODING CAPABILITY

1D / LINEAR CODES	Auto discriminates all standard 1D codes including GS1 DataBar™ linear codes.
2D CODES	Aztec Code, Data Matrix, MaxiCode, QR Code, UPU FICS, USPS Intelligent Mail
POSTAL CODES	Australian Post, Japan Post, KIX Code, PLANET, POSTNET, Royal Mail Code (RM4SCC)
STACKED CODES	Micro-PDF417, PDF417, GS1 DataBar Composites, GS1 DataBar Expanded Stacked, GS1 DataBar Stacked, GS1 DataBar Stacked Omnidirectional

ELECTRICAL

BATTERY	Replaceable battery pack with rechargeable Li-Ion batteries; 3.7 V; 3,000 mAh (12 Watt-hours)
WIRELESS CHARGING	Two charging options: Fast charging or Standard charging

ENVIRONMENTAL

DROP RESISTANCE	Withstands repeated drops from 1.2 m / 4.0 ft onto concrete
TEMPERATURE	Operating: -10 to 50 °C / 14 to 122 °F

INTERFACES

INTERFACES	USB 2.0 Client (with standard Micro-USB connector)
------------	--

USER INTERFACES

VIBRATION	Software programmable (Plus models)
ACCELEROMETER	3-Axis accelerometer
SOFTSPOT™ TECHNOLOGY	Virtual trigger/scan key
TRIGGER	Pistol-grip models only

PHYSICAL CHARACTERISTICS

COLOR CUSTOMIZATION	Top case and battery covers (both handheld and pistol-grip models) and Scan Trigger (pistol-grip models) are available in various standard colors Blue, Red, Green, Orange, Yellow, Grey
COLORS (STANDARD) DISPLAY	4.3 inch full touch TFT-LCD color display; FWVGA: 854 x 480 pixels; 16M colors, LED backlight
TOUCH SCREEN PHYSICAL KEYS	Capacitive, multi-touch, Gorilla® Glass 3 Handheld: Home fully programmable key Pistol-Grip: Home fully programmable key, Scan Trigger key
LIGHTING	Software programmable, lights at the bottom of the battery cover
DIMENSIONS	Handheld: 14.5 x 7.67 x 3.38 cm / 5.7 x 3 x 1.33 in Pistol-Grip: 14.5 x 7.67 x 11.6 cm / 5.7 x 3 x 4.56 in
WEIGHT (WITH BATTERY)	Handheld: 275.0 g / 9.7 oz Pistol-Grip: 305.0 g / 10.7 oz

READING PERFORMANCE

DEPTH OF FIELD	4.3 to 35.0 cm / 1.7 to 13.8 in, depending on bar code density
MINIMUM RESOLUTION	Linear codes at 4 mils; 2D codes at 5 mils
READING INDICATORS	Loudspeaker (Polyphonic); buzzer; Datalogic's patented 'Green Spot' technology for visual good-read feedback

SAFETY & REGULATORY

AGENCY APPROVALS	The product meets necessary safety and regulatory approvals for its intended use.
ENVIRONMENTAL COMPLIANCE	Complies to EU RoHS

SOFTWARE

CONFIGURATION AND MAINTENANCE	Datalogic Configuration Utility (DCU) Datalogic Firmware Utility (DFU) Datalogic Joya Touch Staging
DEVELOPMENT	SDK Suite available upon request

SYSTEM

MEMORY	Joya Touch Basic: System RAM: 512 MB; System Flash: 512 MB Flash Disk Joya Touch Plus: System RAM: 512 MB; System Flash: 1 GB Flash Disk; 4 GB additional Flash on SD card
MICROPROCESSOR OPERATING SYSTEM	XScale™ PXA310 @ 806 MHz; 32 bit Microsoft Windows Embedded Compact 7 Professional

WARRANTY

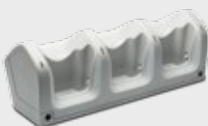
WARRANTY	1-Year Factory Warranty
----------	-------------------------



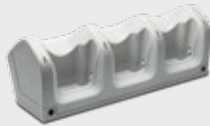
Caution: Laser Radiation - do not stare into beam

ACCESSORIES

Cradles and Holders



▪ 91ACC0043
3-Slot Cradle-Wall Mount



▪ 91ACC0069
3-Slot Cradle-General Purpose



▪ 91ACC0047
Trolley Holder (60 pcs)

Miscellaneous



▪ 91ACC0036
Lanyard



▪ 91ACC0046
Screen Protectors (5 pcs)

Legacy Technology Services

We Rent & Sell All Types Of Barcode Equipment

Call now to talk to an expert

866-271-9891

www.LegacyGlobal.com

Some brands we carry



MOTOROLA

Intermec

DATALOGIC™

Honeywell

EQUINOX
PAYMENTS



About us

- Legacy Technology Services is a leading nationwide provider of mobile computing, barcode, printers and point of sale equipment and services.
- For over a decade, thousands of clients across North America have trusted us to provide equipment from leading manufacturers backed by the services to support them.

Latest Hardware from top manufacturers

- Legacy handles virtually every major manufacturer of mobile computing, barcoding and point of sale equipment.

Expert Repair and Maintenance services

- Legacy is one of the best repair facilities in North America

Discontinued product sourcing

- They don't make it anymore? Our inventory also includes manufacturer close-outs and discontinued equipment to support our clients legacy infrastructure.

Trade-in and Disposal services

- That old equipment laying around your facility may still have some value. Legacy routinely purchases equipment from our clients around the globe.
 - Data destruction
 - Hardware disposal
 - Auditing services

Dedicated client account team

- Dedicated, highly trained account managers are here to answer all your questions and provide top notch service.

Equipment rental services

- Sometimes renting is a better solution, Legacy's huge rental inventory provides the equipment you need for temporary needs and projects.



Legacy, Inc.

160 West Road,
Ellington, CT 06029

Toll Free: 866-271-9891

Fax: 888-522-4684